



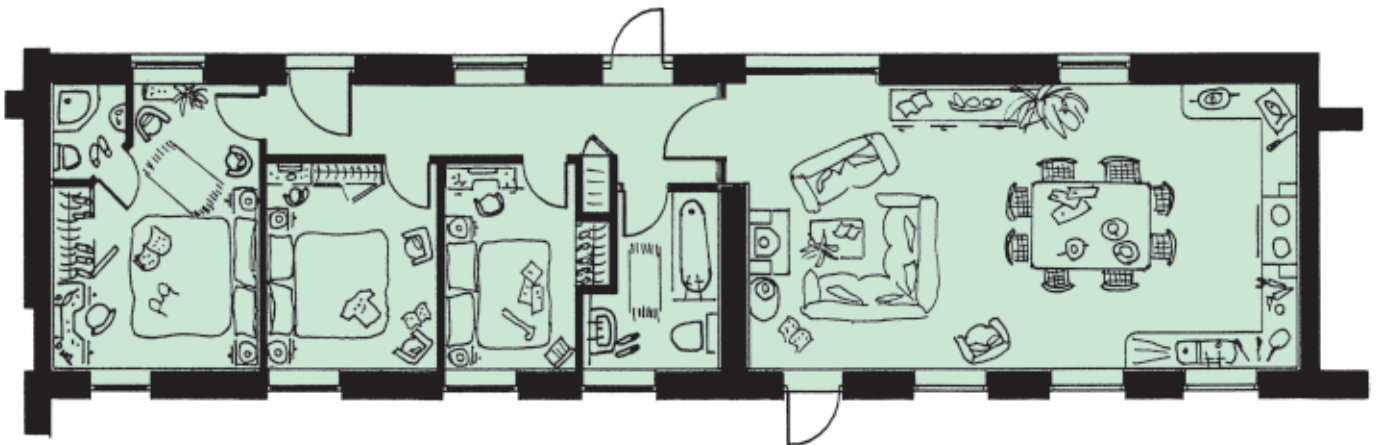
HAY TOR  
HOLWELL ESTATE COTTAGES  
DARTMOOR NATIONAL PARK

# Hay Tor

- Single storey, ground floor
- Sleeps 6
- 2 double bedrooms
- Master bedroom with ensuite shower room
- Family bathroom

The calves that were housed in the stalls in this barn must have had a lovely life with such beautiful views to look out to. Before the conversion started these barns were used when the farm's herd of pedigree Saddleback Pigs were farrowing down. Between Christmas Eve and New Year's Eve 2004 over 60 piglets were born here at Holwell!

This cottage has a large single storey layout with huge open plan sitting room, kitchen and dining area to one end with feature log burner and exposed granite walls and coin stone detail. Here there is also access to an extensive private terrace overlooking Holywell Field and fantastic views from every angle. Two large bedrooms and a Master Suite with ensuite shower room and family bathroom are all located at the opposite end.



Ground Floor